

PowerPanel™

7 Patents Pending

G ❖ Square Series

*Screen design so simple,
even your CEO can do in minutes™*

*Prices so good,
your CFO would love it™*

3 Year Warranty

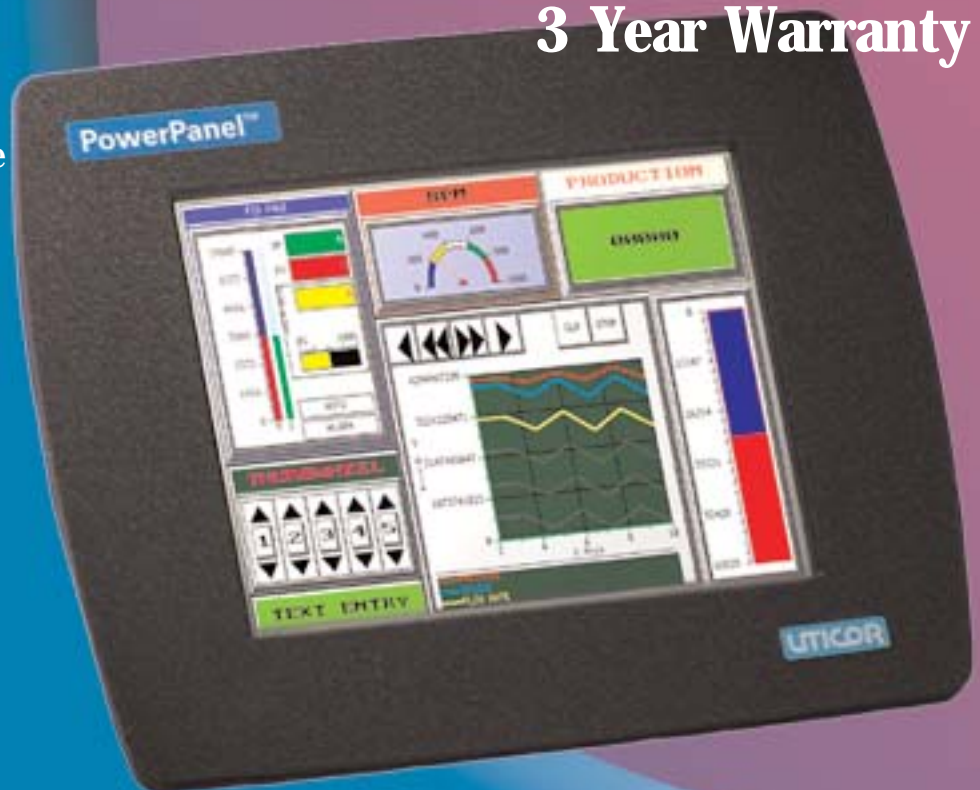
DAZZLING GRAPHICS,
yet incredibly simple to use

FREE Software
and Upgrades

NEMA 4X, Class 1, Div II,
Stainless Steel Option

Customized features and
brand labeling for OEMs

Product Support from
your local distributor



**Connectivity to Most Major PLCs
including DH+, Remote I/O,
Modbus+, Profibus & Ethernet**

UTICOR

Quality on Display

www.uticor.net

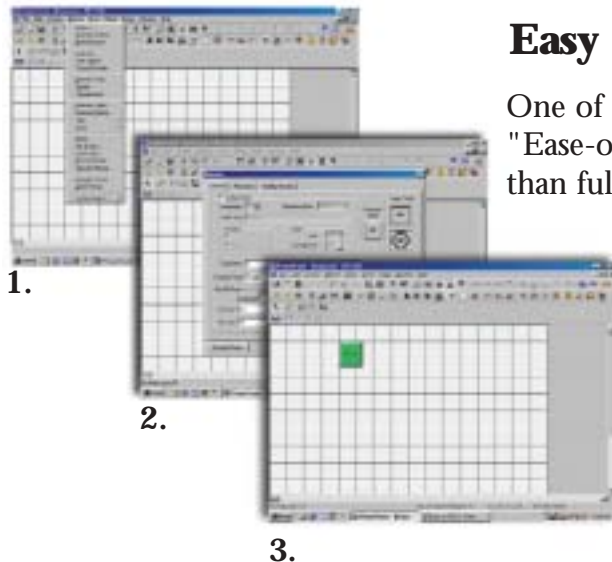
call (800)-527-2841

PowerPanel G ❖ Square Series

UTICOR is proud to introduce the new family of PowerPanel HMIs designed and manufactured in the USA. We call it the G ❖ Square Series, because of its Great Graphics. These panels, designed from scratch for ease-of-use, are built to the same exacting standards and quality that you associate with other UTICOR products. No wonder, that new users' first comments are, "so simple to use", "built like a tank", "Wow!", or simply a big thumbs-up. We feel so confident about the quality and reliability of PowerPanel that we are offering a **3-Year Warranty** on the product — an industry first.

Dazzling graphics with 128 colors

Though extremely easy to configure, the PowerPanel touch panels are not simply push-button pilot-light replacements. These panels provide you high-end panel components with compelling real-life looking graphics, that you would normally only expect on expensive PC-based software HMIs. With 128 colors, blinking of colors, and extensive bitmap support, the unit offers dazzling graphics that would please any discerning user.



Easy as 1-2-3

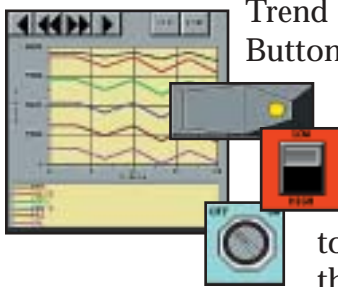
One of the key goals in the design of the new PowerPanels was "Ease-of-use." The new PowerPanel configuration software more than fulfills the design objective. The programming software for the panels is very intuitive, requiring virtually no learning curve. If you are familiar with Windows applications, you will be designing screens within minutes.

In addition to being simple to use, program has several built-in convenience features that will save you screen design time.

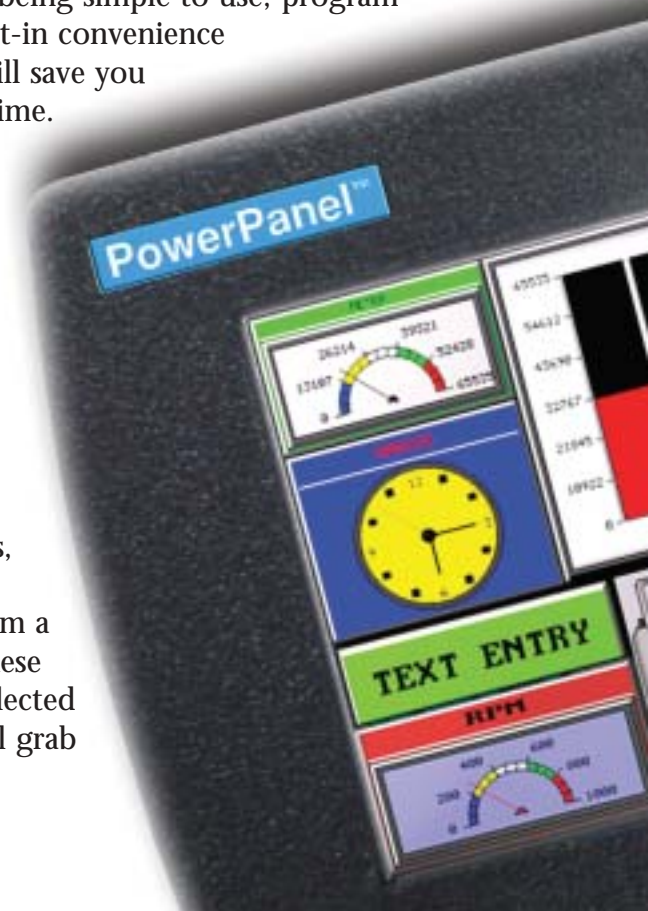
- ▲ 1. Select the component from menu or toolbar
- 2. Fill in the parameters (most parameters have default values)
- 3. Place and size the component

Advanced pre-built components

In addition to the Pushbuttons, Indicator lights & buttons, Numeric entry & displays, the PowerPanel offers panel components such as Analog Meters, PID Faceplate, Bar Graphs, Trend Graphs, Alarms, Recipe, Radio Buttons, Thumbwheel, a variety of Switches, and a rich library of bitmaps.



In addition, the user can select from a palette of 128 rich colors for all these components. Each color can be selected to blink to create components that will grab the operator's attention.



Versatile Bitmaps: More than 2000 Symbols

The PowerPanel Programming Software has flexible bitmap support. We can import bitmaps from the clipboard, files, or from Symbol Factory. Symbol Factory provides you more than 2000 symbols arranged in convenient categories for your preview and selection.

Resize Bit maps without distortion

The PowerPanel editor allows you to resize bitmaps from within the editor without losing information—a feature not found on most HMIs.

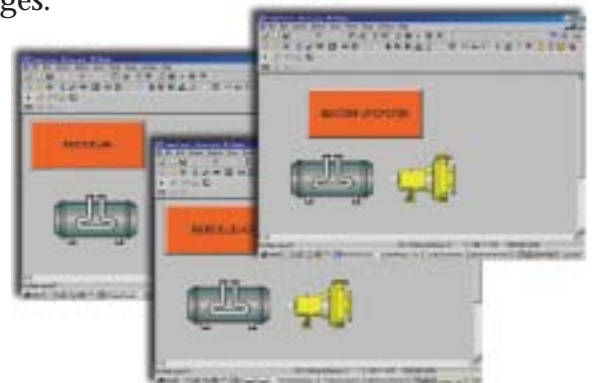


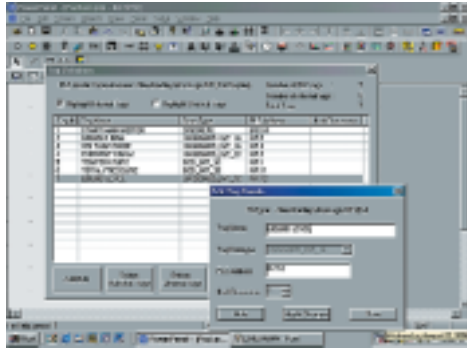
Powerful Alarming capabilities with alarm count display...

PowerPanel has sophisticated alarm capabilities to inform operators of unusual conditions in the machine or process. The PowerPanel can monitor up to 999 conditions for alarms. For each alarm condition, the PowerPanel can monitor either a discrete event (a bit), or a register value being out of range. The alarms can be selectively displayed (as a banner on the bottom of the screen), logged in alarm history, and/or printed on a serial printer. The PowerPanel has a unique feature to let you see the count of each logged alarm. This will help you eliminate nuisance alarms and focus on more critical alarms. Of course, you can view the chronological history of alarms as well as date and time stamp of each alarm.

Multiple language (up to 9) for export markets & multilingual operators...

With the PowerPanel's multiple language capabilities, you can now program the text for Panel components in up to 9-different languages. That means that your English reading operators can work with the panel in English, while the Spanish proficient operators can work in the Spanish language on the same panel. Also, with up to 9 different languages, OEMs exporting to other countries can develop programs to cover many of the commonly used languages.





Tag names for PLC addressing

The PLC addressing uses Tag names, so that you can associate meaningful, easy-to-remember names to the addresses. Additionally, Tags are useful if you use different PLCs with the same HMI program. You will need to design the HMI program only once, and then just change the Tag definitions to match the PLC you have to use—a time saving feature. **You can export the Tag database to a CSV file or to excel application.**

Flash-based Firmware allows easy field upgrades

Flash plug-in Module for program backup & portability

PowerPanel G❖Square series uses flash memory for its firmware. This allows you to upgrade the firmware in the field. You do not have to un-install the units, or send it to factory for any firmware upgrade. In addition, Power Panel supports an optional flash-based plug-in module. This module can be used to back up the user program and for portability of the user program. For example, OEMs can use the convenience of the plug-in module to distribute upgraded version of their programs to customers.



Fast download saves time...

Once you have designed your screens, writing to the panel is very simple and fast. Just select the COM port on the PC that is being used to connect to the panel. Since our program is highly optimized it takes far less time to transfer the program to the panel compared to several competing units.

Customization & Brand Labeling

As is evident from the ease-of-use and advanced features of the product, UTICOR has put many man-years in designing these panels. Although, we have packed most commonly used features in the product, UTICOR recognizes that no two-control systems are alike, and may require some special features not available in standard products. Keeping this in mind our engineers welcome customization opportunities for these panels.

Communication Drivers :

Allen-Bradley

- Data Highway Plus (DH+)
- Remote I/O
- DF1 for SLC 500 & Micrologix family
- DF1 for PLC5
- DH-485 for SLC 500 & Micrologix family
- DH-485 for PLC5

Modicon

- Modbus+
- Modbus RTU

Control Techniques:

- CT-ANSI driver

Siemens

- Siemens S-7 MPI

GE

- SNPX (90/30, 90/70 and Versamax)

Omron

- Hostlink

Mitsubishi

- FX Series

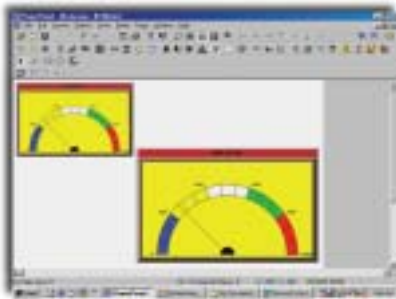
Open Networks

- Ethernet*
- Profibus*

* Available soon

UticorTough™ NEMA 4X, Class 1 Div II; Stainless Steel option

PowerPanel G ❖ Square offers you the UticorTough quality. With NEMA 4X, Class 1 Div II ratings, these panels are very well suited for the harsh industrial environments. Optional stainless steel bezel is available for food and pharmaceutical industries.



Distortion-free Unlimited Scaling...

The PowerPanel uses vector-based designs for the panel components. This allows user unlimited scaling of the components without worrying about distortion. In addition to the distortion-free scaling, the vector-based designs use PowerPanel memory very efficiently, allowing almost 500 screens of reasonable complexity to fit within 512 KB of memory.

Connectivity to Major PLCs

DH+, Remote I/O, Modbus+, Profibus & Ethernet

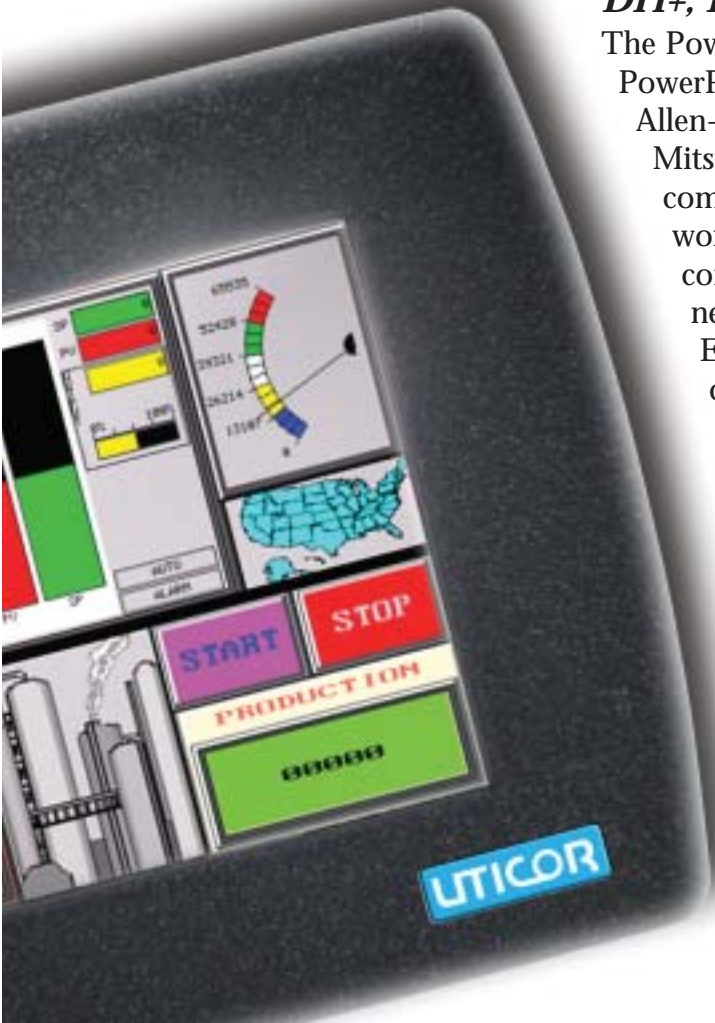
The PowerPanel has connectivity to a variety of PLCs.

PowerPanels communicate with most major PLCs, such as Allen-Bradley, Modicon, Siemens, GE, Omron, Mitsubishi. In addition to the serial drivers, PowerPanels communicate on DH+, Modbus+ and Profibus networks. In addition to the serial drivers, PowerPanels communicate on DH+, Remote I/O, and Modbus+ networks. Support for Profibus, Ethernet/IP, Ethernet (Modbus TCP/IP), and other PLCs will be coming shortly.

Unique ON-LINE programming

PowerPanel's unique ON-LINE programming capability comes in handy to fine-tune your screens while the panel is running.

With ON-LINE programming— not found on many other panels — you work directly on the screens in the panel, allowing you to see the results of your design immediately.



G ❖ Square Series

***A complete family of 6"
Monochrome, 6" Color, 8" Color
and 10" TFT***

PowerPanel G*Square series offers you a complete family of touch panel products to suit your applications. You can choose from the 6" Monochrome to 10" TFT color units. The editing program used to design the screens is the same for all the models.



QuickPanel, PanelView and PanelMate Users ***No-cost Conversion Program***

Uticor offers optional bezels that would allow you to use PowerPanel in an existing cutout of QuickPanel, PanelView, PanelMate and some other competing touch panel products. In addition, Uticor offers a no-cost program conversion from a competing product to PowerPanel for the quantity users. Please consult factory for the details of such conversion.

Specifications

(Common to all models):

Power Input: 20-30VDC (<18W @ 24VDC)
User Memory: 512KB with 512KB expansion module
Num.of screens: Up to 999 (limited by memory)
Com Ports: PLC Port -RS232C, RS422A, RS485A, 15 pin D-Sub (Female)
Program Port-RS232C, RS422A, RS485A, 9 pin D-Sub (Female)

Environmental

Storage temp: -20 to +60 deg C
Humidity: 10-95% R.H., Non-condensing
Vibration: 5 to 55 Hz, 2 G for 2 Hours in the X, Y and Z directions
Shock: 10 G for under 12 ms in the X, Y and Z directions
Electrical Noise: NEMA ICS 2-230 showering arc ANSI C37.90a-1974 SWC
Level C chattering relay test

PowerPanel G Square Series Models:

	6" Mono	6" Color	8" Color	10" Color
Display	4.72" x 3.5"; 16 shades gray	4.65" x 3.5" 128 colors	6.65" x 5.024" 128 colors	8.31" x 6.22" 128 Colors
Screen Pixels	320 x 240	320 x 480	640 x 480	640 x 480
Op. Temp	0 to 45 deg C	0 to 45 deg C	0 to 40 deg C	0 to 50 deg C
Ext Dimensions	6.8 x 8.5 x 2.8"	6.8 x 8.5 x 2.8"	8.21x10.5x2.8"	10.1 x 13.1 x 3.04"
Panel Cutout	7.54 x 5.638"	7.54 x 5.638"	9.25 x 7.1"	11.922 x 8.938"



Corporate Sales and Marketing:
343 St. Paul Boulevard, Carol Stream, IL 60188
Phn: (630) 668-3900; Fax: (630) 668-4676
(800)527-2841; www.uticor.net

Factory and Customer Service:
4140 Utica Ridge Road, Bettendorf, IA 52722
(563) 359-7501; Fax (563) 359-9094
www.uticor.net