

# PowerPanel™ Lite

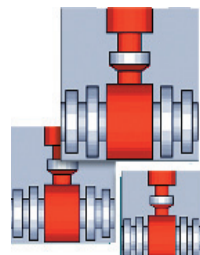
## Advanced Graphics Operator Interface! 7 Patents Pending!

Uticor is introducing an economy version of our standard PowerPanel™. Even though dubbed as “Lite”, its feature set is more enhanced than most of the HMIs on the market. “Lite” has all the features that have earned the PowerPanel™ its reputation for:

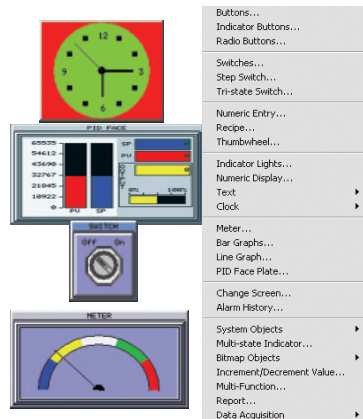
“Screen Design so simple,  
even your CEO can use it in minutes.”



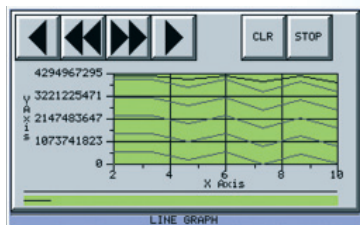
Easy as 1-2-3



Resize bitmaps  
within Editor



Pre-built Advanced  
Panel  
Components



Line Graph,  
Trending & Alarm History

The PowerPanel™ Lite retains most of the features dear to Control Engineers earning it the reputation of:

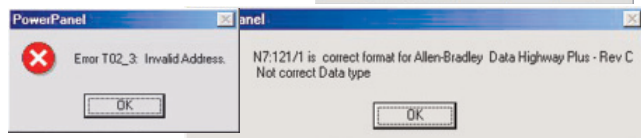
“Features so rich,  
your CCO would want it now.”



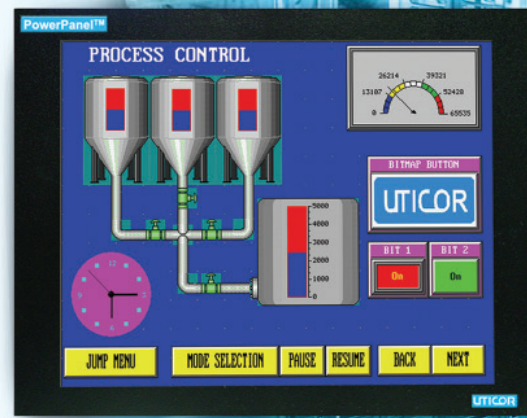
Flash Card /  
Flash Firmware

Tag	Tag Name	Tag Type	PLC Address	PLC Data Type	PLC Comment	Initial Value
1	TEMP	ANALOG	AIW001	REAL	TEMP	0.0
2	TEMP	ANALOG	AIW002	REAL	TEMP	0.0
3	TEMP	ANALOG	AIW003	REAL	TEMP	0.0
4	PRODUCT	COUNTER	CNT001	COUNTER	PRODUCT	0
5	PRODUCT	COUNTER	CNT002	COUNTER	PRODUCT	0
6	PRODUCT	COUNTER	CNT003	COUNTER	PRODUCT	0
7	TEMP	ANALOG	AIW004	REAL	TEMP	0.0
8	TEMP	ANALOG	AIW005	REAL	TEMP	0.0

Highlight  
Unused  
Tags



Syntax  
Checking



- DAZZLING GRAPHICS, yet incredibly simple to use.
- FREE Software & Upgrades
- NEMA 4Plastic Housing, 1 yr Warranty
- Connectivity to Most Major PLCs: DH+, Modbus+, Remote I/O, Profiles, Ethernet
- The One & Only Panel with Online programming
- Flash Module For Program Storage
- Syntax Checking of Address
- Programing Over Ethernet
- Alarm History & Trending
- Multiple Languages
- Multi State Indicator ,Bitmap Buttons & Overlapping Objects

UTICOR

Visit Us at: [www.avg.net](http://www.avg.net) & [www.uticor.net](http://www.uticor.net)

1(800)711-5109

# PowerPanel™ Lite

Same Feature Set & Programming Across all Sizes & Models



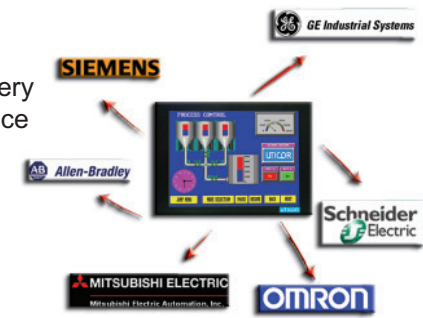
## Universal Feature Set

All Models have the same feature set & are programmed using a single, **FREE Software**. You can very easily switch from smaller panels to large panels & vice versa.

## Online Programming Unique to Uticor and Programming over Ethernet



With our optional Ethernet Connectivity, you can program the PowerPanel™ Lite over Ethernet using standard TCP/IP protocol. You can even do the online programming over Ethernet, allowing you to make modifications to installed PowerPanels™ From the convenience of your office (which maybe half way around the world).



## Connectivity to all Major PLC Networks



## Import/Export to Excel

PowerPanels™ Lite allows you to export data from several objects to a PC network. You can export data from Trend Graph, Alarm history, and populate an Excel spreadsheet. Tag database can also be imported from an Excel spreadsheet.



## PowerPanel Lite offered at Very Competitive prices

In keeping with our promise **“Prices so good, that your CFO would love it”** the PP Lite offers the most advanced graphical operator interface at a very competitive price. The Lite Series has all of the features of the standard PowerPanel™ except for; Data Acquisition, Data Analysis, Downtime Analysis, SPC, CpK, Dual Drivers, Expressions, 3 yr Warranty, Stainless Steel Option, NEMA 4X class 1, Div. 2, and cannot be used as a plug and play replacement.

PowerPanel Lite	6" Mono 6" Color STN	8" Color STN	10" Color TFT	15" Color TFT
Display	<b>Mono:</b> 4.72" x 3.5" 16 Grey Shades <b>Color:</b> 4.65" x 3.5" 128 Colors	6.65" x 5.024" 128 colors	8.31" x 6.22" 128 colors	12.02" x 9.02" 128 Colors
Screen Pixels	320 x 240	640 x 480		
Operating Temp	0-50 °C	0-45 °C	<b>10" STN:</b> 0-50 °C <b>10" TFT:</b> 0-55 °C	0-55 °C
Ext Dimensions	8.04 x 6.140" x 2.430"	10.894" x 8.748" x 2.289"	13.56" x 10.59" x 2.289"	16.100" x 12.336" x 4.208"
Panel Cutout	7.54" x 5.64"	9.25" x 7.10"	11.93" x 8.94"	14.96" x 11.68"
Display Brightness	<b>Mono:</b> 140 nits <b>Color:</b> 180 nits	140 Nits	<b>10" TFT:</b> 200 nits	250 nits
Touch Screen	48 resistive cells (8 x 6 matrix)	192 resistive touch cells (16 x 12 matrix)		
Weight	<b>Mono:</b> 1.4 lbs <b>Color:</b> 1.5 lbs	2.2 lbs	3.95 lbs	6.9 lbs
Power Input	20-30VDC 15 Watts @ 24VDC	20-30VDC 16 Watts @ 24VDC	20-30VDC 18 Watts @ 24VDC	20-30VDC 33 Watts @ 24VDC
User Memory	512Kb System RAM			1Mb System RAM
RAM Modules	512Kb RAM Module, 1Mb RAM Module			
Flash Modules	512Kb Flash Module, 1Mb Flash Module, 2Mb Flash Module			

General Specifications for All Models	
Num of Screens	Up to 999 (Limited by Memory)
Com Ports	<b>PLC Port:</b> RS232C, RS422A, RS485A, 15 pin D-Sub (Female)  <b>Program Port:</b> RS232C, RS422A, RS485A, 9-pin D-Sub (Female)
Storage Temp	-20 to +60 °C
Humidity	10-95% R.H. Non-Condensing
Vibration	5-55 Hz, 2 G for 2 hrs in the X, Y, Z directions
Shock	10 G for under 12 ms in the X, Y, Z directions
Electrical Noise	NEMA ICS 2-230 showing arc ANSI C37, 90a-1974 SWC Level C Chattering Relay Test
Enclosure	NEMA 4, (Indoor)
Agency Approvals	UL, CUL, CE

**UTICOR**

Visit Us at: [www.avg.net](http://www.avg.net) & [www.uticor.net](http://www.uticor.net)

1(800)711-5109