

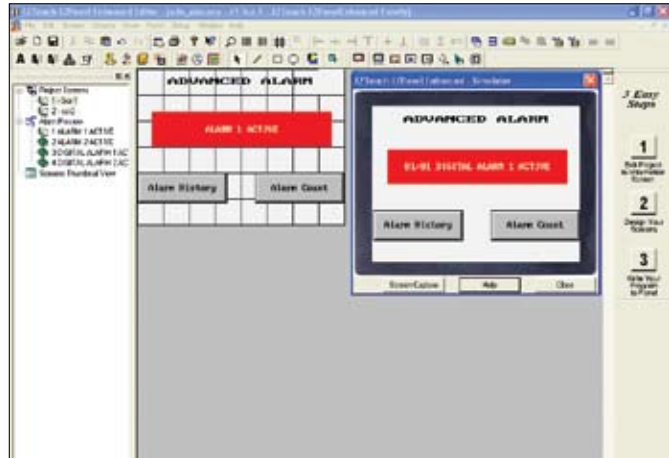
## Unique Features

### Advanced Alarm Management

Alarm data can be set up in alarm reports. If an alarm occurs, an active alarm appears on the screen and the alarm report can be selected to appear on the screen when the Alarm History button is pressed. The operator or maintenance department can view the alarm history, alarm count, and specific details of the alarm. The Alarm detail shows the cause of the Alarm, tag value, hi-low limits and when it was cleared.

Alarms tables do not need to take up operating screen real estate if alarms are not active.

The alarms can be triggered from any PLC tag value, either discrete On/Off or set points of variable data. The alarm database can be imported from Excel and exported to Excel. Multiple alarm banners can be displayed on the same page.



Free Sizing and Location of Alarm Banner