

Tough Panel™

Unique Features

Troubleshoot your Panel/Project Half way across the World without leaving your Desk!!

Toughpanels have an exclusive unique feature that allows you to view and control any screen on your touchpanel over the internet. Toughpanels with dedicated processor need an NVC option card whereas Toughpanels with Windows processor has this function built-in. This optional card has its own processor that allows remote monitoring and control. View and control operator screens over the internet from your PC as if you were right on the touch panel on the factory floor. **This is also a great tool for management/quality personnel in any plant to monitor production over intranet.**



NetView & Control (NVC) option card



NVCC option card plugs into the extension connector of the EZSeries Touchpanels. It has an Ethernet Port that allows a PC anywhere in the world to view any screen in the Panel in Real-Time as well as control the operation of the Panel using your mouse, also in Real-Time. This card can also be configured to send Emails from the Panel. As a side benefit RMC card also gives you the ability to store upto 2GB of Data in an SD card on-board.

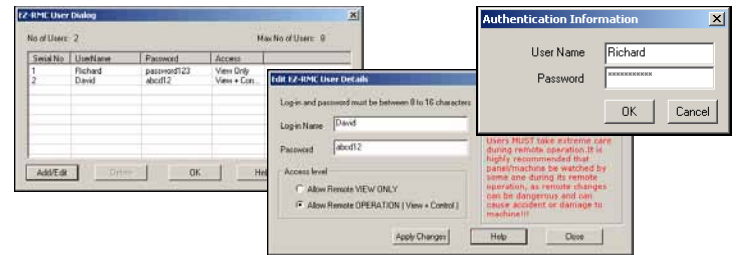
Note: RMC option card cannot be used on panels that already have another option card such as DH+ / R I/O.

Built-in NetView & Control (NVC) in CE Toughpanel

Toughpanels with Windows CE Processor has a built-in Ethernet port that allows it to perform NetView and Control function without the need for the additional NVC optional card. It should however be noted that the response time of the CE Toughpanel would be slightly slower than the Toughpanel with dedicated processor and NVC option card because the latter has a separate processor to perform the NVC function.

High Level of Password Security

For Obvious reasons RMC feature has multiple levels of password protection.

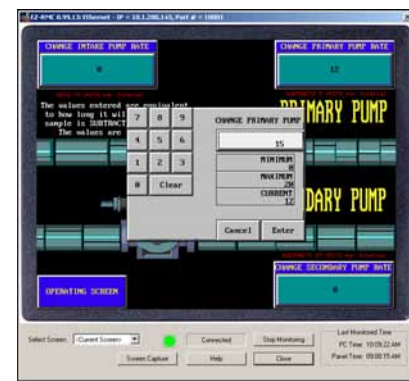


Monitor Machine/Process operation through the Panel



With UT-NVC software installed in your PC you could monitor any screen on the Touchpanel addressed by the software in Real-Time allowing system troubleshooting and/or management review of the machine operation.

Control Machine/Process operation through the Panel



Under multiple password security UT-NVC software allows you to operate the Touchpanel just as if you are standing right next to it. Clicking on a mouse or entering a preset thru your PC in Chicago will perform the same actions as if an operator was doing the same on the touchscreen half way across the world.