

UTDaq Data Acquisition Software

Log Data For Any PLC Tag

Available on RS232 Serial Port as well as Ethernet

It's as Simple as **1-2-3**
collect, save and store PLC tag data

What is UTDaq?

UTDaq is a data acquisition utility, designed to collect and save tag data from one or more (connected and running) Toughpanels.

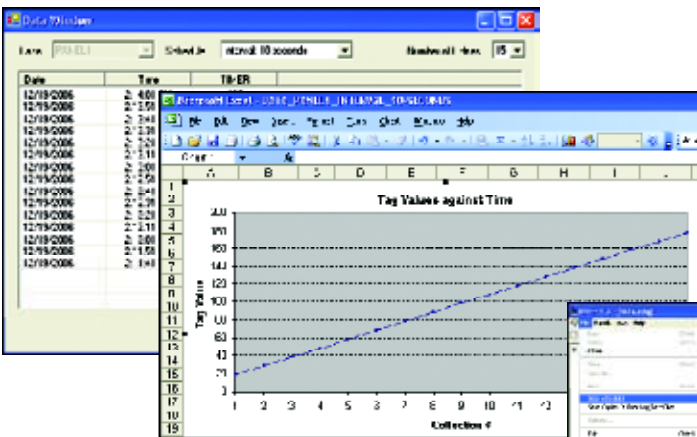


What kind of communication medium is required?

UTDaq works on both Ethernet as well as Serial communication medium.

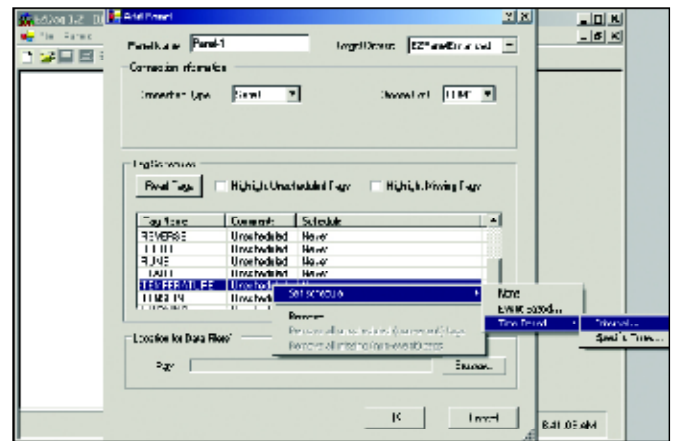
How to view data?

Data files are organized in a convenient user selectable format (tab delimited or CSV) and can viewed in excel or any text editor.

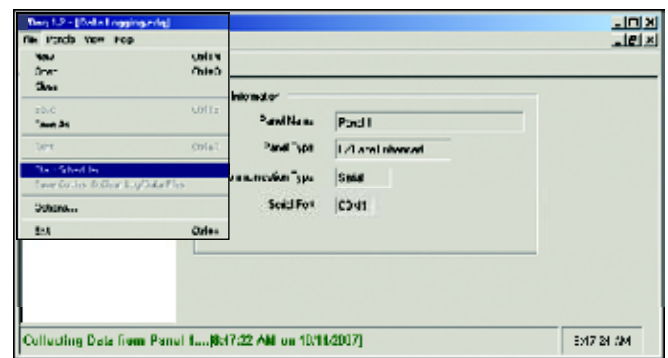


How does it work?

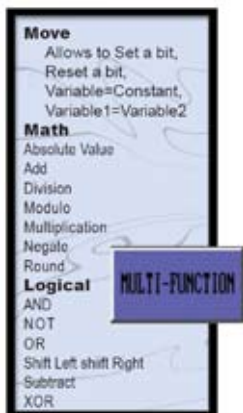
- 1 Run the UTDaq application on a PC to create a Data Acquisition Schedule file.
- 2 Specify the tags and a schedule for each tag for data acquisition.
- 3 The Schedule can be set either on the basis of time or an event.



- 4 While creating the Data Acquisition Schedule file, Panel (from which data has to be collected) must be connected to the PC.
- 5 Once the Schedule file is created, the application can start collecting and storing acquired data.



Math-logic/Multi-function Buttons, Overlapping Objects



Master Tough SmartMarquees offer a sophisticated control, called the Multi-function Object. As the name implies, this Object allows you to perform multiple functions, including Mathematical and Logical operations on PLC data. For example, you can set/reset multiple bits & transfer constants or variables or expressions to tags. Remarkably, this Benefit allows a user to perform up to 20 operations with one Object. Master Tough SmartMarquee also allows you to perform these Multiple functions under the PLC control a very useful feature to offload

mathematical & logical computations from the ladder logic to the Marquee.

- 6 For the CE Toughpanels, you have an option to collect the data on the panel itself but to create the Schedule file, you still need a PC.

