



## INDUSTRY

Medical

## SPECIFIC AREA

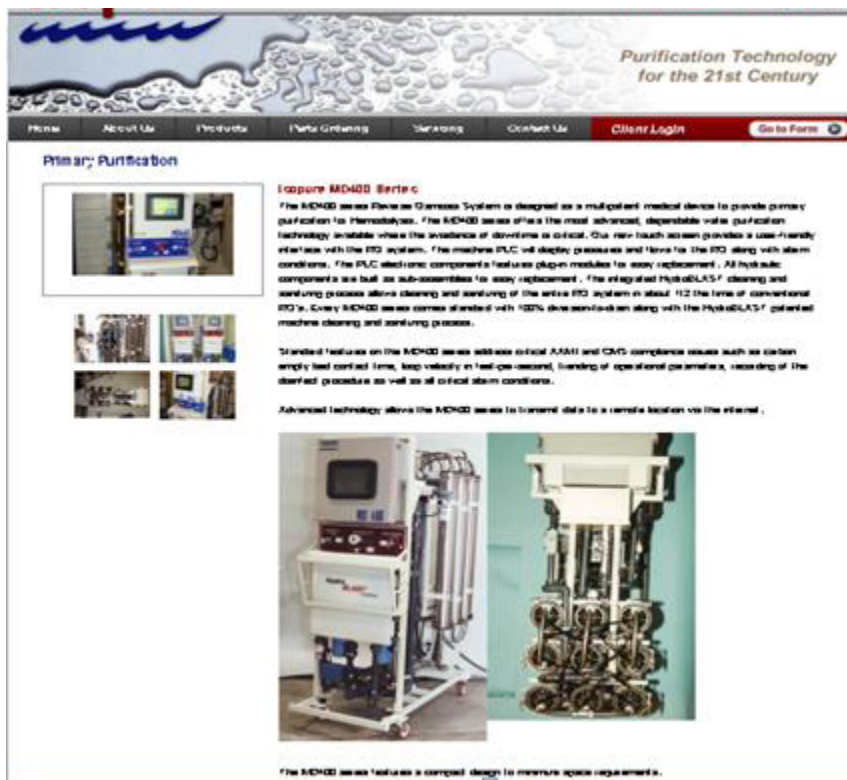
Treatment -HemoDialysis Machine

## PRODUCT USED

Utitor 8" Tough Panel with Utitor 64 I/O PLC

## APPLICATION

The Utitor Tough Panels are being used on Reverse Osmosis System which is a medical device used to provide primary purification for Hemodialysis. This procedure is done to treat advanced or permanent kidney failure by removing excess fluid, minerals, and wastes.

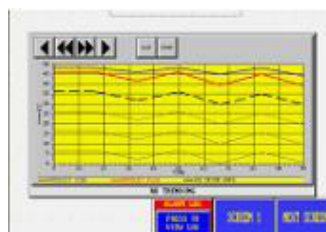


## WHY UTICOR ?

Being a part of the medical industry, Isopure required an advanced, dependable and long-lasting Control system since the avoidance of downtime is extremely critical. In addition to a user-friendly interface, the Utitor Tough panel includes features like data logging, trending and visual alarms which are very useful in tracking the patient's progress. The NetView card allows the Panel to be monitored and controlled from a remote location via Ethernet.



Data logging A data log screen provides a display of the system pressures along with system flows, overall system recovery, water quality and system hours



Trending Object: A trending screen displays the previous 20 days of the operational parameters for the system.



Alarms: The alarm screen appears automatically when an alarm condition is present. The alarm history log is recorded with the date and time of the